

Lobster Quadrille

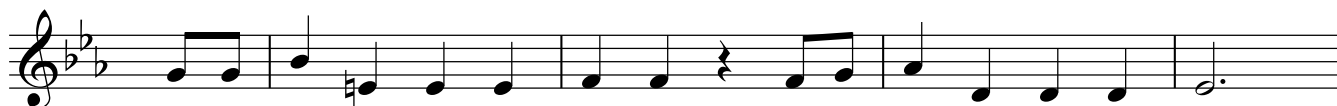
tune by Beethoven
from *Piano Concerto no.3*



W.King: 1. Will you walk a lit - tle fast - er! **W.Knight:** It's so slow be - hind a snail!



R.Pawn 4: There's a por - poise close be - hind us and he's tread - ing on our tail.



W.Queen: See how ea - ger - ly the lob - sters and the tur - tles all ad - vance,



Pawn 3: They are wait - ing on the shin - gle, Won't you come and join the dance?



ALL: Will you, won't you, will you, won't you, will you join the dance?



Will you, won't you, will you, won't you, won't you join the dance?

(instrumental link) Fm⁶ G⁷ Cm Fm⁶ G⁷ Cm

v.3 G⁹ Cm G/B Cm G

4W: What mat-ters it how far you go, or where you swim or slide,

 G⁹ Cm Gm/D D⁷ G

There is a - no - ther shore, you know, up - on the o - ther side

 C⁷ Fm Bb⁷ Eb

And the far - ther off from Eng - land, the - near - er it's to France,

 Fm/Ab G Fm/Ab G

Turn not pale, be - lo - ved snail - But come and join the dance?

 G⁹ Cm G⁷ Cm G

ALL: Will you, won't you, will you, won't you, will you join the dance?

 G⁹ Cm Fm⁶ G⁷ Cm

Will you, won't you, will you, won't you, won't you join the dance?

 G⁹ Cm G⁷ Cm G

ALL: Will you, won't you, will you, won't you, will you join the dance?

 G⁹ Cm Fm⁶ G⁷ Cm

Will you, won't you, will you, won't you, won't you join the dance?

 Fm⁶ G⁷ Cm/Eb Fm⁶ G⁷ Cm

Won't you join the dance? Won't you join the dance?